

Plagiarism Prevention Strategies, Tools & Techniques

Adam Barbary

Team Leader eLearning support

Did you know?

Some of your students are cheating.

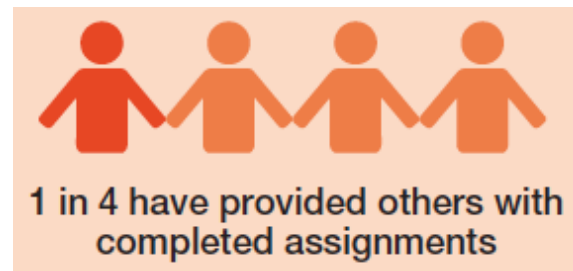
Yeah, sorry you had to hear it from me.

You might think cheating is a lot of effort, but it's not.

So how many are cheating?

Some interesting stats

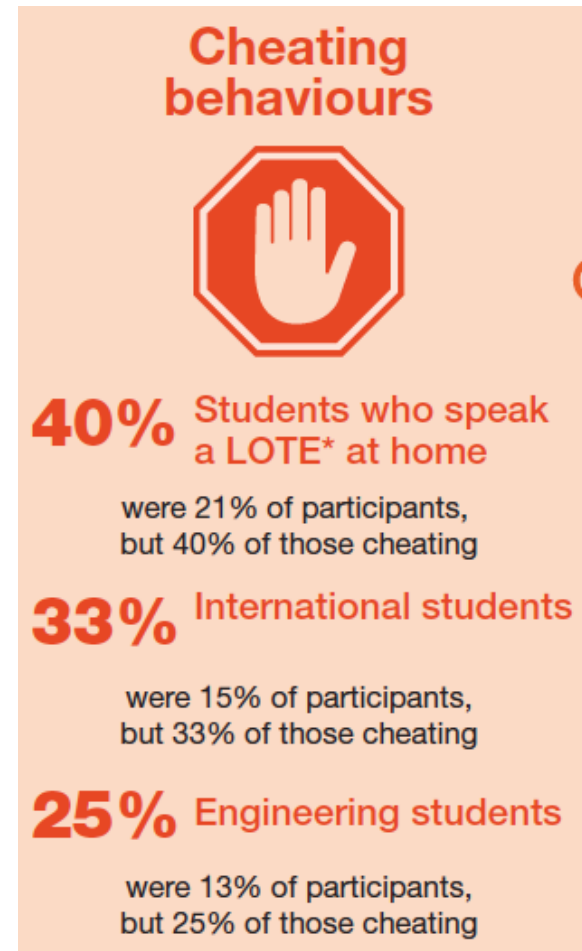
According to recent research by Assoc Prof Tracey Bretag (University of South Australia):



Who are the cheats?

Statistically,

“the most likely to cheat are, male, non-English speaking, international, engineering students, who study on campus”



WHY?

What were the main indicators of those who were most likely to cheat?

There was a strong correlation in responses from the cheating group with:

- being dissatisfied with the course
- insufficient support
- insufficient feedback
- lack of engagement by teaching staff

The more students were supported, the less likely they were to cheat.

We refer to the outsourcing of assessment as Contract Cheating.

Where do students get their assignments?

From other students 60%

Friend or Family 51%

Partner 9%

Paid for a service 13.3%

Go ahead, Google “Write my essay”,
or “Paraphrase tool”

*These results relate only to the small group of students who were classified in the report as the cheating group (about 6% of those surveyed)

They even rank them!



Best Australian Writers

We know which writing services you can trust

Top 5 Assignment Writing Services of Australia

RANK	NAME	RATING	MORE INFO
1	EssayRoo.com	★★★★★	Read Reviews Visit Site
2	Australianhelp.com	★★★★★	Read Reviews Visit Site
3	Bigassignments.com	★★★★★	Read Reviews Visit Site
4	BoomEssays.com	★★★★★	Read Reviews Visit Site
5	Gradeonfire.com	★★★★☆	Read Reviews Visit Site

Welcome!

Are you looking for a legit Australian writing service that you can rely on?

We've reviewed almost every writing service of Australia to find out which of them can be trusted and which are better to be avoided. Our reviews are made of student's testimonials who shared their personal experience as well as expert's audition of each company.

How are cheats detected?

Knowledge of the student	71%
Language ability	62%
High text match via software (eg. Turnitin)	49%

Turnitin is not infallible, but is still responsible for identifying approximately half of all cheats.

Turnitin is your friend

(And your students too!)

What Turnitin Does

- Assists with referencing
- Checks for matching text
- Provides great feedback tools
 - Highlighting
 - Quick comments
 - Rubrics
 - Voice feedback

What Turnitin does not


- Detect plagiarism
- Hold multiple versions
- Support Mac Pages and Open Office docs

Feedback Studio

feedback studio Tessa Ruiz The Goliath of the Sea -- /100 < 1 of 1 > ?

The Goliath of the Sea

The majestic blue whale, the goliath of the sea, certainly stands alone within the animal kingdom for its adaptations beyond its massive size. At 30 metres (98 ft) in length and 190 tonnes (210 short tons) or more in weight, it is the largest existing animal and the heaviest that has ever existed. Despite their incomparable mass, aggressive hunting in the 1900s by whalers seeking whale oil drove them to the brink of extinction. But there are other reasons for why they are now so endangered.



Blue Whale - Balaenoptera Musculus

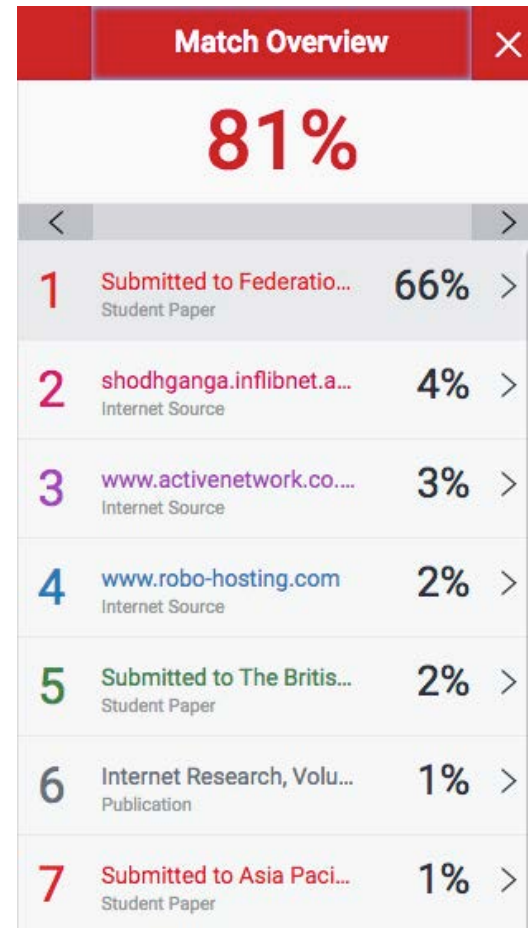
The blue whale's common name derives from bluish-hue that covers the upper side of its body, while its Latin designation is *Balaenoptera musculus*. The blue whale belongs to the Mysticeti suborder of cetaceans, also known as baleen whales, which means they have fringed plates of fingernail-like material, called baleen, attached to their upper jaws. Blue whales feed almost exclusively on krill, though they also take small numbers of copepods. An adult blue whale can eat up to 40 million krill in a day.

Page: 1 of 2 Word Count: 517 🔍 ————— 🔍

What's in a number?

Turnitin matches text and provides a score based on the percentage of text matched. This is called the similarity score.

How would you feel about?:



The screenshot shows a 'Match Overview' window with a red header and a close button. The main score is 81%. Below the score is a list of 7 matches, each with a number, source name, type, and percentage. The matches are:

Match Number	Source Name	Type	Percentage
1	Submitted to Federatio...	Student Paper	66%
2	shodhganga.inflibnet.a...	Internet Source	4%
3	www.activenetwork.co....	Internet Source	3%
4	www.robo-hosting.com	Internet Source	2%
5	Submitted to The Britis...	Student Paper	2%
6	Internet Research, Volu...	Publication	1%
7	Submitted to Asia Paci...	Student Paper	1%

A match!

OK, so you find a match!

the assumption. **D**ixon J has stated “the very foundation of estoppel is the change of position to the prejudice of the party relying upon it”⁴

This is just a quote, it was referenced in the document, and although it contributes to the similarity score, isn't an issue.

Thompson v Palmer (1933) 49 CLR 507

Word salad

Internet source

Full Source View




cryptography.gmu.edu

LL password is changed in every inventory. 7. Conclusion Although recent actions about RFID technology taken by Wal-Mart Corporation and Department of Defense has heat up the topic of RFID once again since WWII, the technology has not yet been proliferating as expects. This is mainly due to the reasons of the lack of standardization, the security/privacy issues, and more importantly the cost. To decrease the cost, standardization is a very important factor. In addition, security/privacy issues are barriers to people's acceptance of this technology. Therefore, more works have to be done in standardization and addressing the secu

Defence has warmth up the subject of RFID at the end of the day. since WWII, the innovation has not yet been multiplying as anticipates. This is fundamentally because of the reasons of the absence of institutionalization, the security/protection issues, and all the more essentially the expense. To lessening the expense, institutionalization is a critical variable. Likewise, security/protection issues are hindrances to individuals' acknowledgement of this innovation. In this manner, more works must be done in institutionalization and tending to the security/protection issues with a specific end goal to multiply the selection of RFID innovation.

QuickMarks

The majestic blue whale, the goliath of the sea, certainly stands alone within the animal kingdom with its adaptations beyond its massive size. At 100 ft in length and 190 tonnes (210 short tons) in weight, it is the largest existing animal that has ever existed. Despite their aggressive hunting in the 1900s by whalers, whale oil drove them to the brink of extinction. There are other reasons for why they are now so

 Assign Criterion

Cite Source:
Please use the link below to find links to information regarding specific citation styles:
http://www.plagiarism.org/plag_article_citation_styles.html


Add comment




Citation Needed


ft) in length and 190 tonnes (210 short tons) in weight, it is the largest animal that has ever existed. Despite their aggressive hunting in the 1900s by whalers, whale oil drove them to the brink of extinction. There are other reasons for why they are now so

The blue whale's common name is derived from its Latin designation is **Balaenoptera musculus**. The blue whale is a member of cetaceans, also known as baleen whales, which means

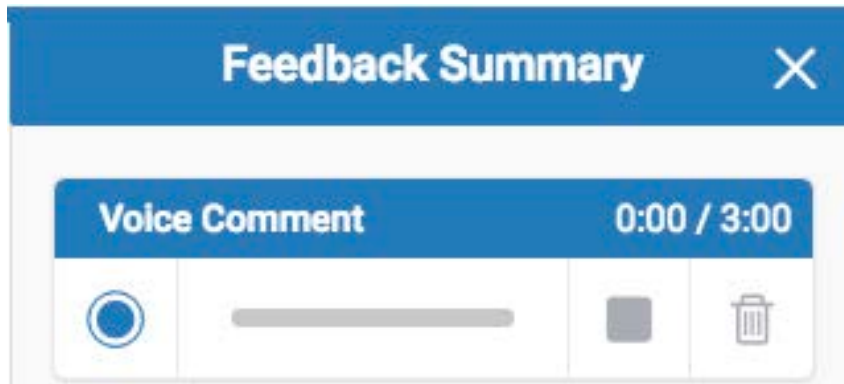
 Assign Criterion

B *I* U 

Are you sure this is the right term?

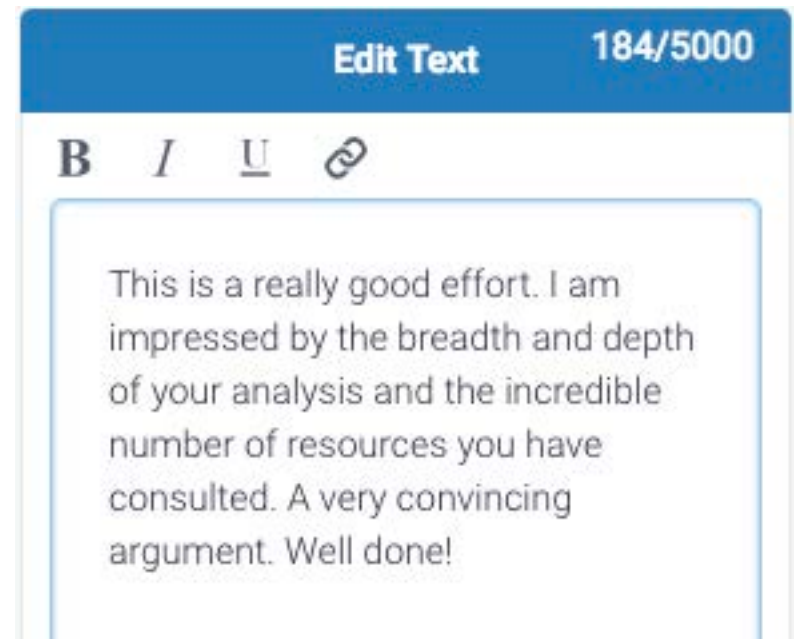
 [Convert to QuickMark](#)

Feedback summary



Three minute voice recording

5000 character summary



Rubrics

Rubric

CCSS 11th-12th Grade

2.8 / 5 [Apply to Grade](#)

Cohesion **4**
Skilled

Conventions **5**
Exceptional

Skilled

The text skillfully uses words, phrases, and clauses as well as varied syntax to link the major sections of the text. The text identifies the relationship between the claim and reasons as well as the evidence. The text effectively links the counterclaims to the claim.

Proficient

The text uses words, phrases, and clauses as well as varied syntax to link the major sections of the text. The text connects the claim and reasons. The text

What can I do?

- Accept that cheating exists
- Educate your students about what cheating is, and
- The consequences of cheating
- Report suspected incidents of cheating
- Nurture relationships with students

Questions?

Thanks, Adam Barbary