

# FEDERATION UNIVERSITY AUSTRALIA

## NANYA STATION WESTERN NEW SOUTH WALES: GUIDE TO COMMONLY OCCURRING REPTILES



**Nanya Station, owned and managed by the Federation University was purchased with assistance from the Department of Environment and Heritage and the Lower Murray Darling Catchment Management Authority (now incorporated in Local Land Services).**



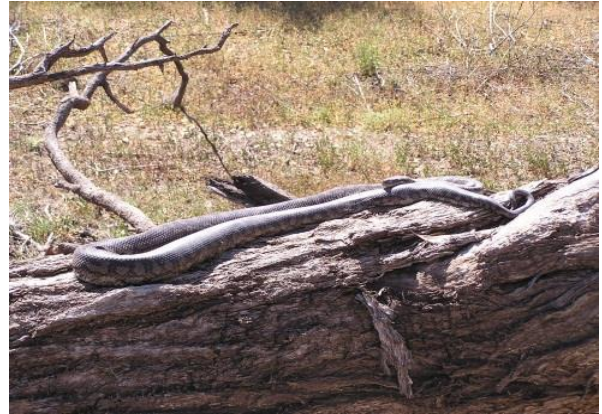
Australian Government  
Department of the Environment



# SNAKES



*Vermicella annulata* Bandy-bandy



*Morelia spilota metcalfii* Carpet Python



*Pseudechis australis* King Brown Snake



*Pseudonaja modesta* Ringed Brown-snake



*Rhamphotyphlops australis*  
Southern Blind Snake



*Simoselaps australis*  
Coral Snake

Photos by Grant Palmer, Jen Sedgwick and Martin Westbrooke

## DRAGONS



*Ctenophorus pictus*  
Painted Dragon



*Amphibolurus nobbi* Nobbi Dragon



*Ctenophorus fordi*  
Mallee Dragon



*Pogona vitticeps*  
Eastern Bearded Dragon



*Ctenophorus nuchalis*  
Central Netted Dragon

## GOANNAS



*Varanus gouldii* Sand Goanna

# SKINKS



*Ctenotus schomburgkii*



*Ctenotus regius* Royal Ctenotus



*Ctenotus atlas*  
Spinifex Striped Skink



*Eremiascincus richardsonii*  
Broad-banded Sandswimmer



*Ctenotus brachyonyx* Skink



*Egernia inornata* Desert Skink



*Lerista labialis*  
Pink Lerista



*Lerista punctatovittata*  
Speckled Short-limbed Skink

## GECKOS



*Strophurus elderi*  
Jewelled Gecko



*Dyplobactillus damaeus*  
Beaded Gecko



*Nephurus levis*  
Smooth Knob-tailed Gecko



*Diplodactylus vittatus*  
Eastern Stone Gecko

## LEGLSS LIZARDS



*Lialis burtonis*  
Burton's Snake-lizard



*Pygopus nigriceps*  
Hooded Scaley-foot



*Delma australis*  
Southern Legless Lizard