



Destination Berwick

Lose yourself in an urban jungle of cool cafes, art galleries, buzzing laneways and **vibrant multicultural communities**.

The hardest decision you'll have to make when choosing to study at Federation University is which campus is right for you. Ranked the 10th most liveable city in the world*, students at our Berwick Campus in Melbourne have access to an excellent public transport network, healthcare services, cultural centres, beautiful parklands and a thriving entertainment precinct. No matter where you're from or what interests you, you'll feel right at home in Melbourne.

If you're looking to connect with people from all walks of life, **you've found us.**



Campus facilities

With an emphasis on business, allied health, social work, nursing and IT – the Berwick Campus provides students state-of-the-art facilities and the latest technologies they'll need to master for their future career. The multi-level campus design features science labs, nursing simulation labs, a library, student lounge, study rooms, lecture theatres and more amidst spacious landscaped surroundings. Did we mention there is plenty of on-campus parking available for cars, bikes, and scooters? Plus, if arriving by train, Berwick station is just a 15-minute walk to campus.



TAKE A
VIRTUAL TOUR

Discover Berwick

Combining modern architecture with impressive landscaping, you'll find our Berwick Campus in the greater Melbourne suburb of the same name. Take a train to visit the eclectic city centre, catch a bus to enjoy the rides at Luna Park, hop on a tram to bask in the sun at St Kilda beach, or ride a ferry from South Bank to the Royal Botanic Gardens and explore the beautiful Yarra River precinct – there's no shortage of fun things to see and do here. Did we mention it's also a coffee drinker's paradise?

Crowned the fastest-growing capital city in Australia, Melbourne is a favourite destination for people from across the globe. So much so, over 31% of Victorians were born overseas and 26% of Victorians speak another language other than English**.



*The Economist Global Liveability Index, 2022

**Victorian Government, 2022

Make campus your home

Transition to university with ease by opting to stay on-campus in Fedliving housing. Not only will you benefit from living within walking distance to class but enjoy the best start to university life, making new friends and attending a range of fun student activities. You may even be eligible for a scholarship towards your Fedliving accommodation.

Visit our website to learn more: federation.edu.au/fedliving



Community and industry engagement

As Australia's first Co-operative University, we're expanding on our commitment to provide learning beyond the classroom to every student who studies with us. We are embedding co-operative learning in every course by 2025, meaning you'll experience real workplaces, real industry projects and have real career opportunities before you graduate. Our strong network of local and global employers makes this possible and continue to provide industry engagement opportunities to our students now and into the future.

The campus is relatively small, making it person-centred so I get the support that I need as an international student. "

We have high-tech labs. We are being taught by scientists, experienced nurses and doctors as well. We get the academic and placement support which is essential to succeed and become great nurses.

Berwick is a great location because I can easily get into the city if I want to have some fun or go to the country if I want to wind-down and explore nearby forests or beaches."

MUSKANDEEP KAUR, Bachelor of Nursing



Study options

Be spoilt for choice – over 50 courses commence at our Berwick Campus each year! Visit our website to explore them all. ↗

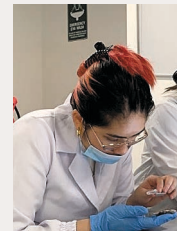
COURSE	2024 intakes	Tuition fee (per year)	IELTS requirements
Bachelor of Biomedical Science	Feb, Jul	\$30,030	6.0 / 6.0
Bachelor of Business	Feb, Jul	\$27,610	6.0 / 6.0
Bachelor of Community and Human Services	Feb, Jul	\$26,040	6.5
Bachelor of Information Technology	Feb, Jul	\$26,350	6.0 / 5.5
Bachelor of Nursing	Feb	\$32,970	7.0 / 7.0
Bachelor of Psychological Science	Feb, Jul	\$27,820	7.0 / 6.5
Master of Public Health	Feb	\$24,150	6.5 / 6.0
Master of Social Work (Qualifying)	Feb	\$28,140	7.0 / 7.0



PRANAYA LOHANI
Master of Social Work (Qualifying)

“ The greatest thing I enjoy about Berwick Campus is meeting people from all around the world. I've got classmates who are from different continents to share my experiences, as well as listen to their experiences.

Living on campus has been a great experience for me and Berwick is a fantastic place to live, the people are so friendly. ”



ROVINNI YSABELLA TABARES
Bachelor of Biomedical Science

“ Everyone is really friendly, especially the teacher. You can always ask them questions and they'll respond right away. The Berwick Campus has really amazing and high-tech facilities that I really enjoy using. ”



Federation.edu.au
International phone: +61 3 5327 9018

#feduni/ feduniaustralia

Disclaimer: Information contained in this brochure was correct at the time of printing (June 2023). Federation University Australia reserves the right to alter any program, procedure or fee, as deemed necessary. Prospective students should confirm program information by visiting federation.edu.au and vtac.edu.au or by contacting the University directly. To find out more regarding International Education, please call +61 3 5327 9018, federation.edu.au/international. Produced by Federation University Australia. Federation University Australia programs are delivered with Victorian and Commonwealth Government funding to eligible applicants. CRICOS Provider No. 00103D | RTO Code 4909 | TEQSA No. PRV12151 (Australian University), CC_170823



Education and Training