

# Partner Forum Work Integrated Learning Options

Dr. Debbie Lord

Discipline Leader in Business  
Global Professional School

Federation University Australia acknowledges the Traditional Custodians of the lands and waters where our campuses, centres and field stations are located and I pay my respects to Elders past, present and emerging. I extend this respect to all Aboriginal and Torres Strait Islander and First Nations Peoples.

**Ballarat:** Wadawurrung

**Berwick:** Boon Wurrung and Wurundjeri

**Brisbane:** Turrbal and Jagera

**Gippsland:** Gunai Kurnai

**Nanya Station:** Mutthi Mutthi and Barkindji

**Wimmera:** Wotjobaluk, Jaadwa, Jadawadjali,  
Wergaia and Jupagulk



*Stretch Reconciliation Action Plan artwork by Josh Muir and Shanaya Sheridan*

# Welcome

- Welcome everyone
- Overview of WIL
- Benefits of WIL
- WIL courses
- Co-Op model.



# What is Work Integrated Learning (WIL)?

- This is the integration of education theory from the classroom and workplace experience.

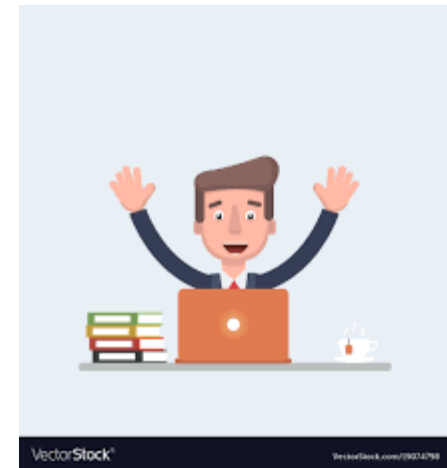


# How can WIL assist me to get my dream job?

WIL courses provide students with the opportunity to apply academic knowledge in a genuine business setting.

Knowledge learned in the classroom can be implemented in an industry setting, providing students with a clear understanding of what future work may be like. The integration of academic learning allows students to develop skills and knowledge to enable them to become Job ready.

This type of approach provides students with a sneak peek of future job activities in a real-life business setting.



# How can WIL assist me to get my dream job?

WIL courses provide students with industry and business knowledge and experience.

Placements allow students to network, utilize industry systems and allow students to experience an authentic work environment.

WIL activities focus on genuine workplace functions such as:

- Marketing
- HR functions
- Accounting
- Project management
- Training and Development



# Types of WIL

Most Feduni undergraduate students are required to undertake WIL courses. Several types of WIL opportunities are available for students:

- Internships
- Placements
- Projects
- Case studies

# Types of WIL courses

- Business Internships and Industry Placement Program give lengthy on-the-job experience.
- Industry and Community Projects, allow students to participate and learn from Industry and community experts.
- Case Studies consider real-world operations in a virtual or classroom situation. Langdon Building and Construction case study. Example.



# Types of WIL.

Many students have work commitments and cannot attend Internships and Placements.

WIL options for these students can include a case study course or project course. These courses present a specific industry project for students to solve. A great way for students to network and gain exposure to Industry frameworks and systems.

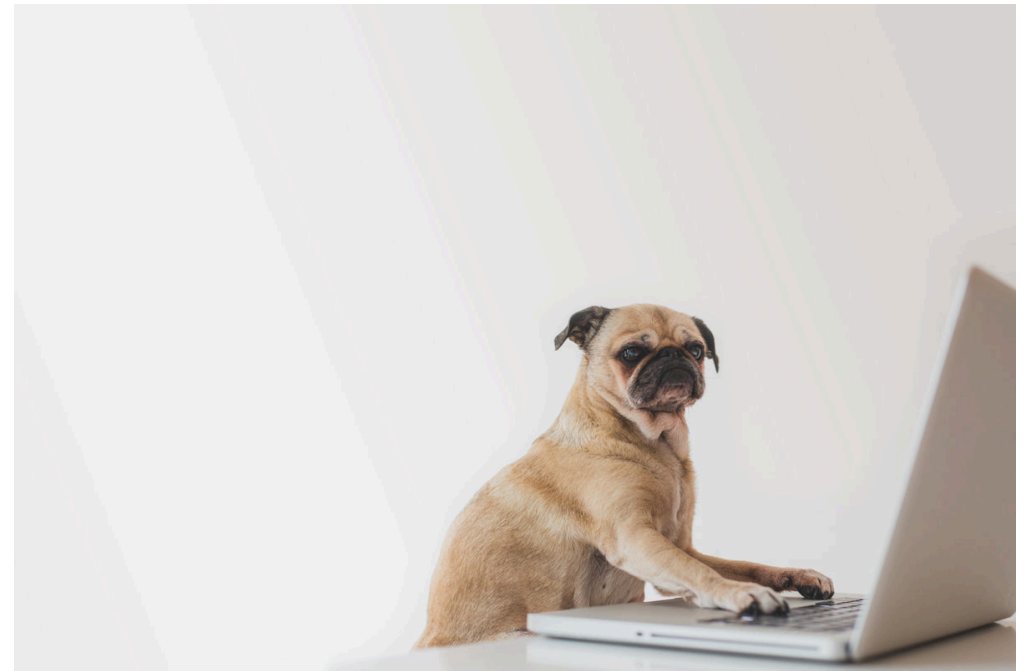
These activities provide students with analytical, conceptual, and entrepreneurial skills in addition to developing an understanding of Industry specific activities.

# When do you do a WIL course?

To give students the best opportunity to participate and succeed in undertaking a WIL course, they are best attempted in a student's second or third year of study.

This allows students to develop personal skills and build knowledge of their chosen careers.

WIL courses, especially Internships, Placements, and Projects, can be completed over breaks. Many organizations seek interns and are flexible with commencing times.



# WIL Course Coordinators

- Facilitate and support a quality learning environment meeting Federation University standards
- Utilise Federation University learning and teaching materials and keep in regular contact with students to ensure a positive experience.
- Support students to ensure that assessment is linked to WIL functions.
- Regularly meet with students and industry to provide feedback and assistance.



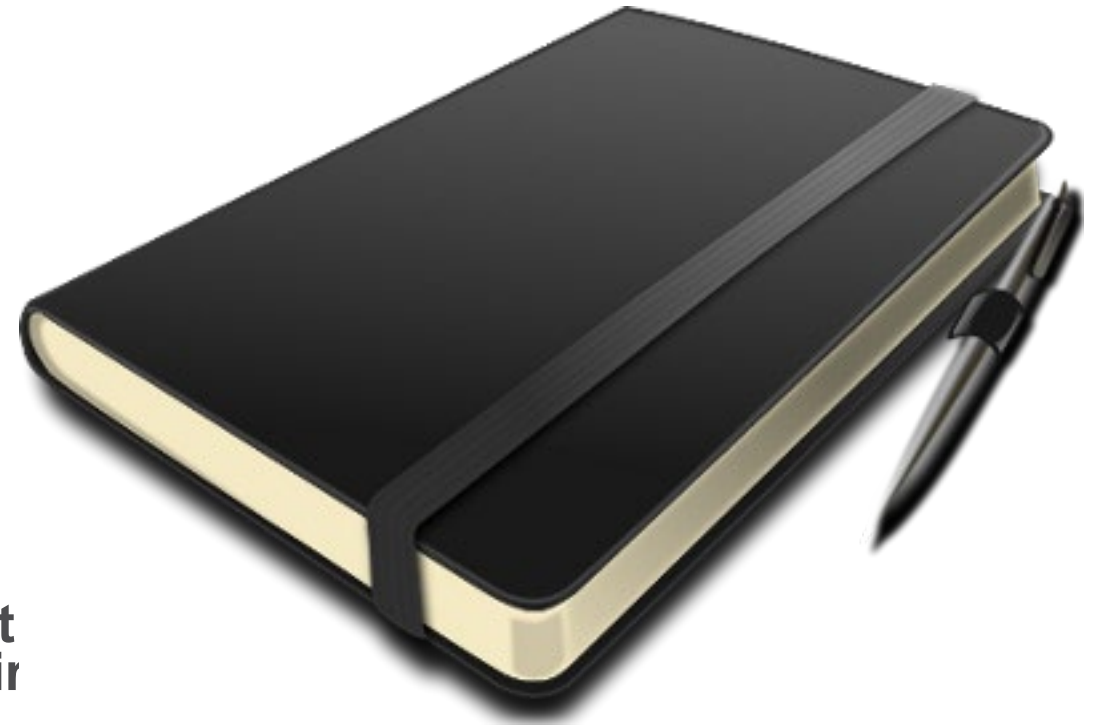
*Don't forget to add student notes so we can track what's going on.*

# WIL Course materials

Course materials are available 2 weeks before commencement, located in a Moodle shell

The Moodle shell will include:

- Course Description
- Course resources
- Textbooks/readings
- Other requirements
  
- **For Internships and placements, it is highly recommended that Course Coordinators set up a series of meetings to connect with their allocated students.**



# Policies, procedures and guidelines

University policy, procedures and guidelines to support students working within Industries:

- Schools develop further procedures relating to school specific responsibilities
- Partners develop processes consistent with these
- Partner lecturers should be familiar with University and local requirements
- Policies, procedures and guidelines are outlined in the Partner Operational Manual

<http://federation.edu.au/staff/policy-central>



# Existing WIL relationships...

## Organisations

- Andrew Rowan Wealth Management
- Ballarat Group Training
- Bendigo Bank
- Ballarat Beer Festival
- Central Highlands Water
- Geelong Football Club
- I.B.M.
- MADE
- McCain Food
- Mecure Hotels
- MarketingCity of Casey
- Munash Organics
- NAB
- Ballarat Health Services
- Barefoot Pathways & Training
- CenterCare
- CAFS – Child and Family Services
- Federation University – HR, Finance & Peak Accounting
- Petstock Ballarat
- State Revenue Office

# Existing WIL relationships...

## Community Groups

- Spring Fest
- Ballarat Show Society Horse Expo
- Bobcats Hockey Club
- Melbourne Food & Wine Festival
- Haddon Community Market
- Eureka Strikers Soccer Club
- Ballarat Beer Festival
- Ballarat Swap meet.

# WIL – Endless Possibilities.

Many students who have participated in WIL courses have found employment as a direct result of their WIL experience.

Students have used WIL as a stepping stone to their chosen careers and, in many cases, are employed by the host organization.

Opportunities for our students exist...we just need to make a connection with Industry to support our students to develop and grow.



# Example of WIL Assessments

- Marketing – Example. RSSS Calendar
- HR – Job descriptions, EBA. T & D, Grants BRLTC \$\$
- Accounting – client roles.
- Project management – Industry-specific/Community-based Bendigo Bank.
  
- A clear alignment between academic learning and industry participation to scaffold and develop knowledge and further learning in pursuing career objectives.

**THE DREAM JOB!**

Questions??

Thank you!!